

## Papercraft Call Duck Kit



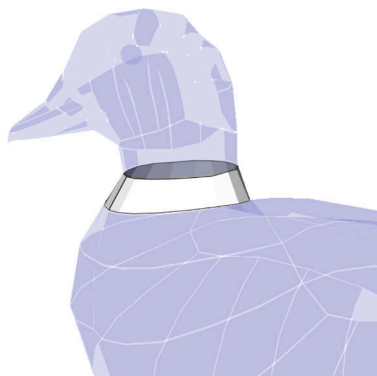
### Required tools and materials:

- Printed model kit consisting of 8 white pages, 2 orange pages, and 1 blue 5 cm by 7 cm rectangle
- Craft knife/scalpel and cutting mat **or** small sharp scissors
- Quick drying glue, tacky PVA is recommended
- Wooden barbecue skewers or similarly shaped implements for glue spreading, applying pressure to glue flaps where fingers can't reach, and rolling/shaping tightly curved parts

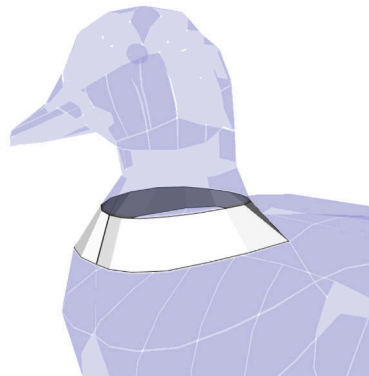
### General tips and tricks:

- Allow at least 6-10 hours to complete your model duck
- The duck model is constructed in the 'smooth' method, where the paper parts are gently shaped by hand before gluing but not creased firmly, except where explicitly stated
- Solid black lines indicate cut lines, dashed grey lines are mountain folds, and dash-dot grey lines are valley folds
- Glue should be applied sparingly. Too much will take too long to dry and saturate the paper making it weaker
- Apply glue to only a few flaps at a time and press the join firmly for several seconds until the bond holds. For tricky hard to reach joins a barbecue skewer or tweezers can be used
- This is a high difficulty kit with some small and fiddly parts. A good outcome will require precision and care when cutting out the parts and lining up the glued edges
- The model can be constructed inside-out, with the printed lines facing inward, for a slightly cleaner look and greater challenge

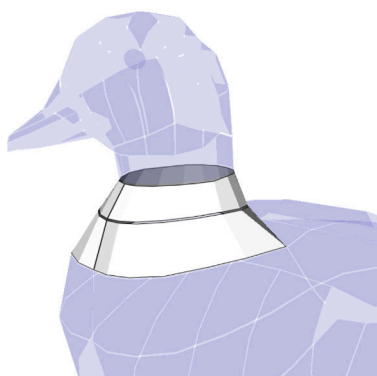
## Assembly Instructions



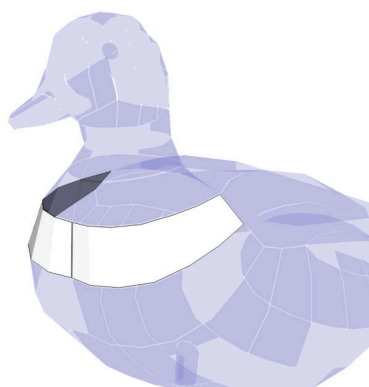
1. Cut out part **B1** and glue into a ring



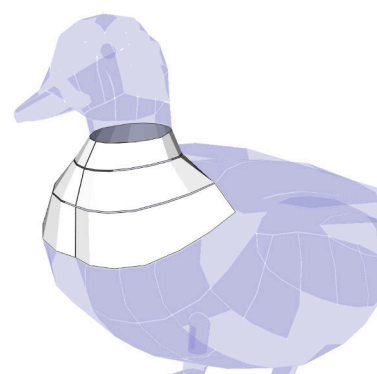
2. Do the same for **B2**



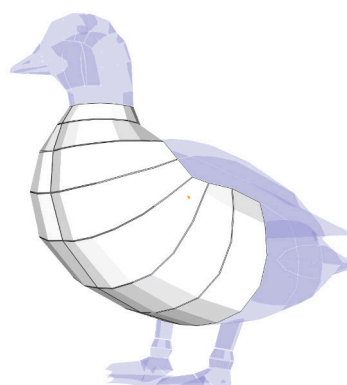
3. Glue **B2** to **B1**, lining up the previously glued edges



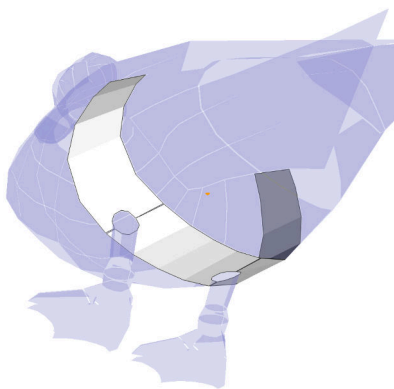
4. Cut out and join **B3L** and **B3R** to make part **B3**



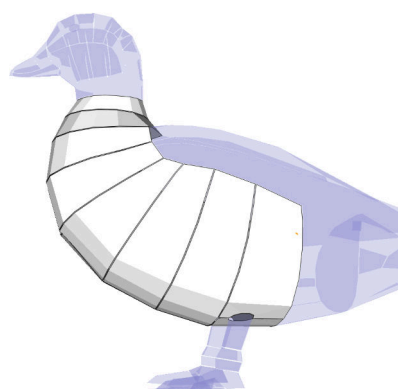
5. Glue **B3** to **B2**, again lining up the centre edge. Glue the flaps in the centre and at the sides first to ensure part is positioned correctly



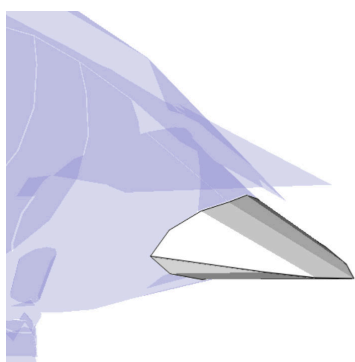
6. Repeat steps 4. and 5. for parts **B4** to **B7**



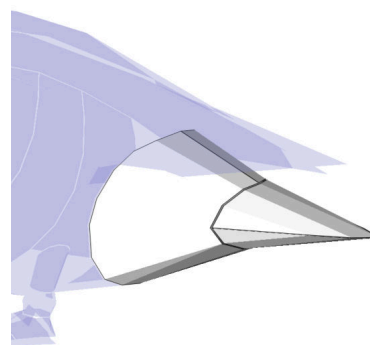
7. Cut out and join parts **B8L**, **B8C**, and **B8R** to make **B8**



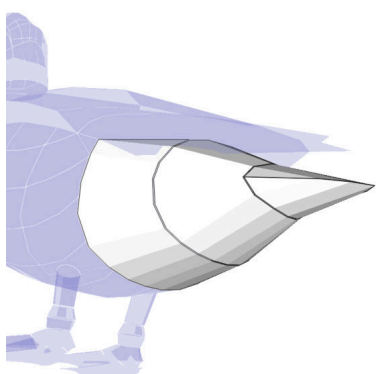
8. As in step 5. glue **B8** to **B7**



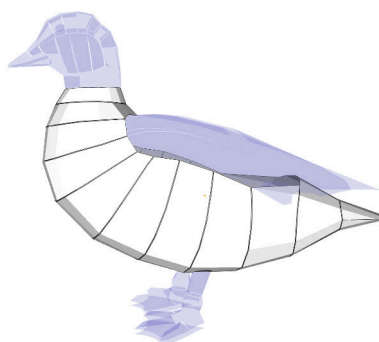
9. Cut out and glue the upper (**T1**) and lower (**T2**) tail parts



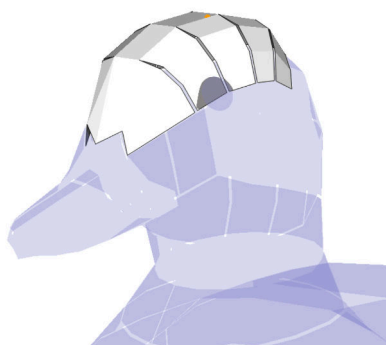
10. Cut out and glue **B10** into a ring. Attach **B10** to the tail



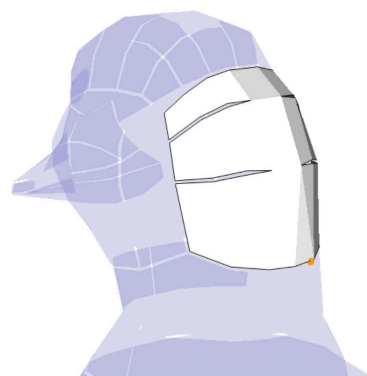
11. Cut out **B9** and glue to **B10**



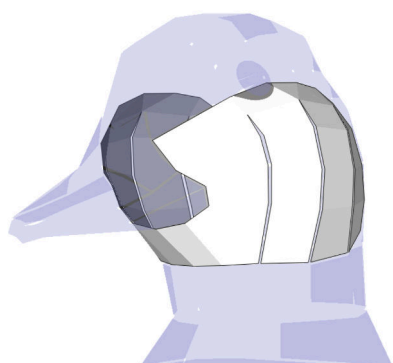
12. Attach the fore and aft sections of the body (**B8** to **B9**)



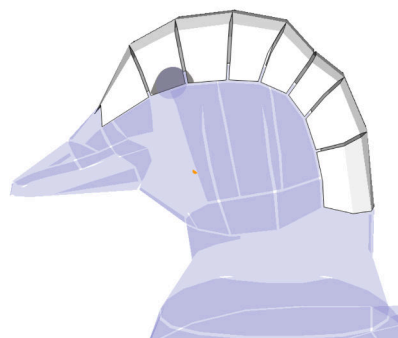
13. Cut out and glue **H1**



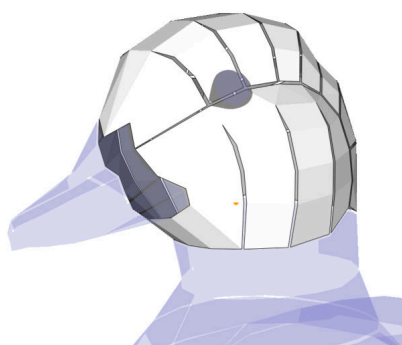
14. Cut out and glue **H2**



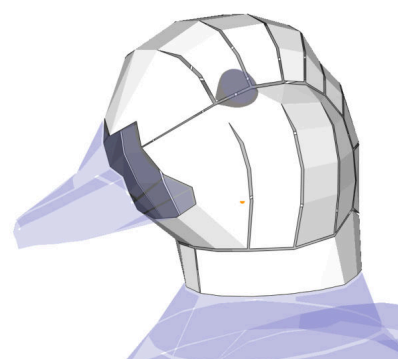
15. Cut out and glue **H3**



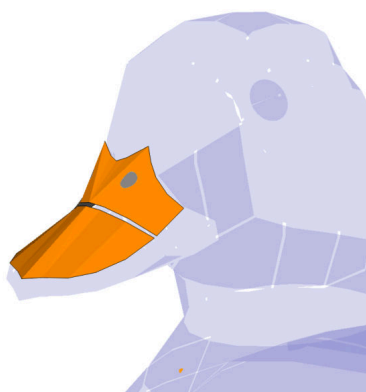
16. Join the top and back parts of the head, **H1** and **H2**



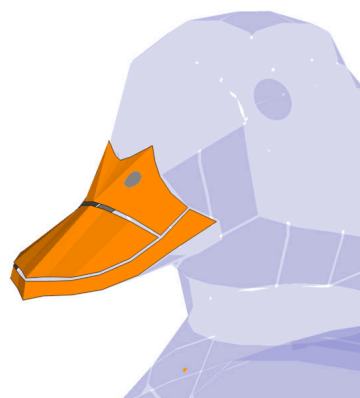
17. Attach the cheeks (**H3**) to the head, one side at a time starting from the beak opening and working backwards to the neck



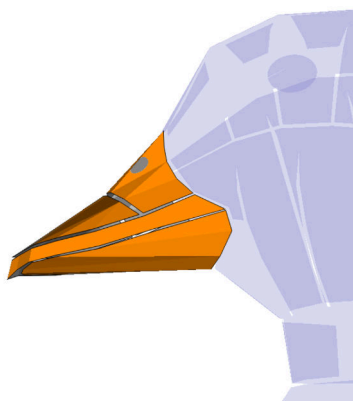
18. Cut out and glue **H4** into a ring and attach to the head



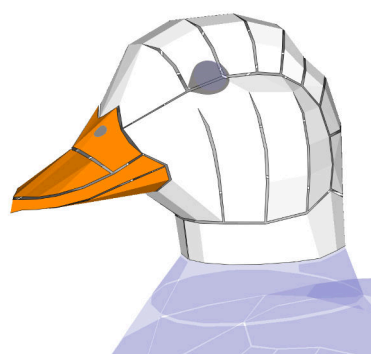
19. Cut out and glue **BK1** to **BK2**



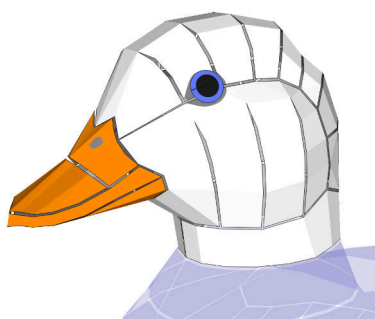
20. Cut out and attach **BK3**, gluing the back edges first to ensure the rim of the beak is correctly positioned, followed by the front/centre



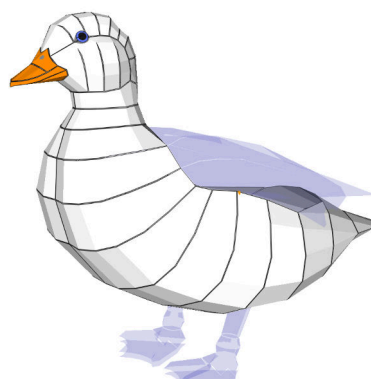
21. Cut out and glue **BK4** to **BK3**. The lower beak should sit slightly inside the rim near the tip of the beak



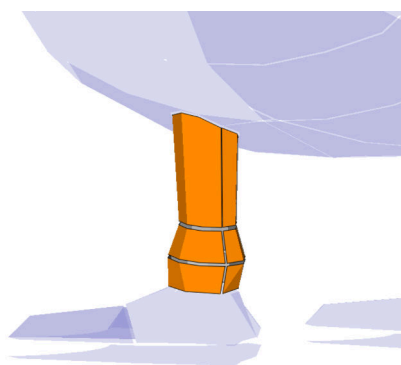
22. Glue the beak to the head



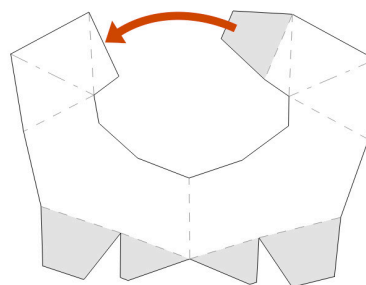
23. Cut out and glue the eyes into cones. Attach to the head over the grey marking



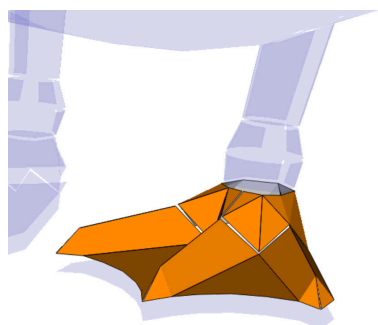
24. Glue the completed head to the body



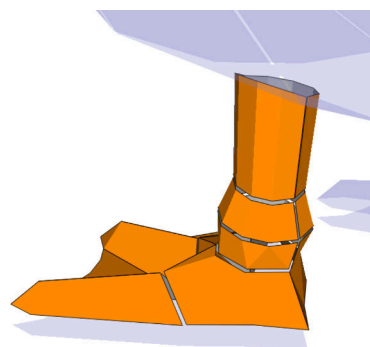
**25.** Cut out and glue **L1** to **L3** into rings then attach in order, again with the join edges lined up



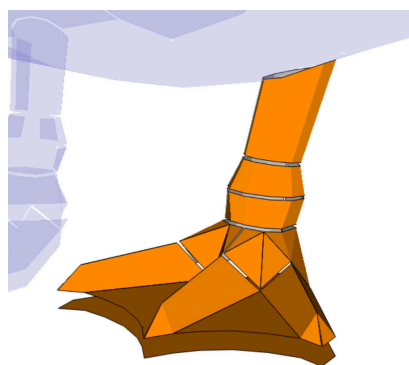
**26.** Cut out **L4** and **L5**, creasing firmly on the fold lines. Glue **L4** into a ring, and glue the points of the toes



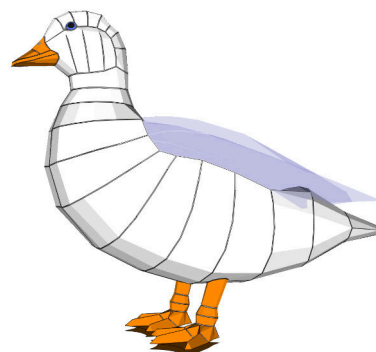
**27.** Attach **L4** to **L5** with the join edge of **L4** aligned with the centre toe ridge



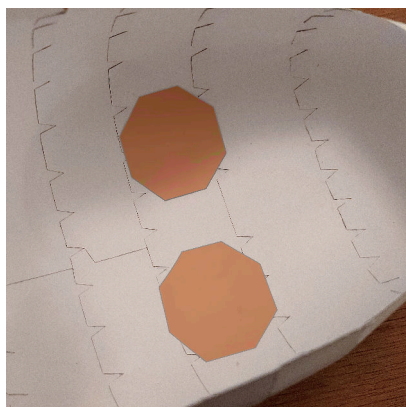
**28.** Glue the leg to the foot (**L3** to **L4**) with the vertical joint edge of the leg lined up with the back toe (Hallux)



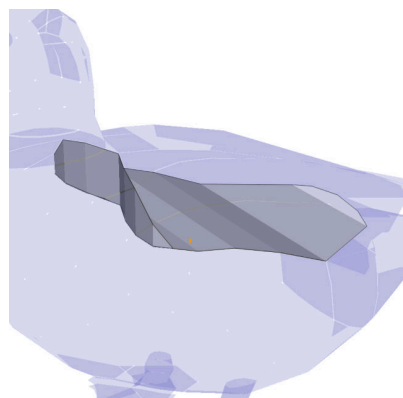
**29.** Cut out and glue **L6** onto the base of the foot with the printed side enclosed. Press against a flat surface until the glue is dry to ensure that the feet are flat



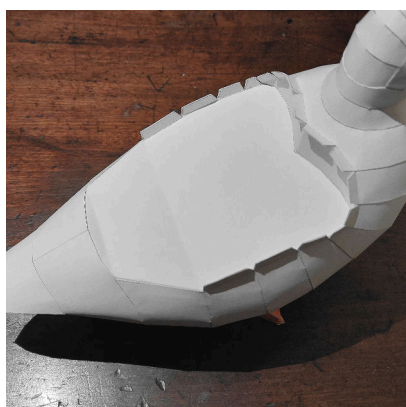
**30.** Repeat steps **25.** to **29.** for the other leg and glue the legs to the body. The vertical joint edge of the legs should be lined up with the join edge of part **B8**



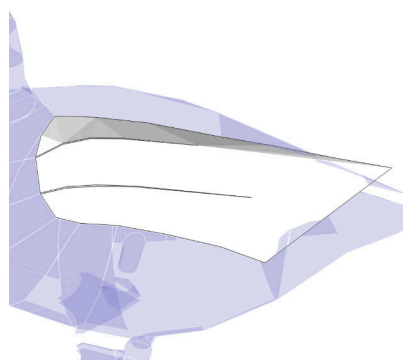
**31.** Reinforce the leg join from the inside, with pieces of scrap card roughly 4 cm by 4 cm, so that the glue flaps are sandwiched between the body and the reinforcement. Keep the duck standing with the legs aligned until the glue has dried



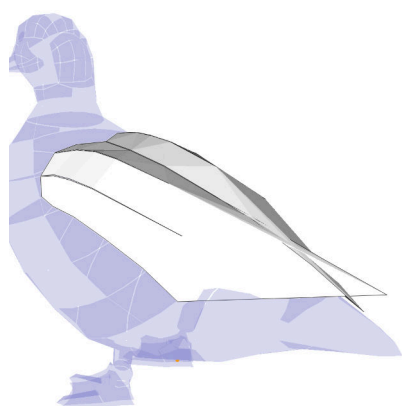
**32.** Cut out and glue support pieces **S1** and **S2** together, with the flaps of **S2** on the underside of **S1**. At this point, if your duck falls forward or backwards instead of standing upright, glue scrap card inside the body to allow it to balance



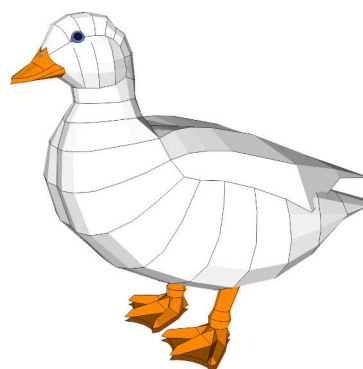
**33.** Glue the support into the open edge of the body. Where there are flaps on both edges, glue the parts flap-to-flap with the flaps pointing outwards



**34.** Cut out and glue the wing parts **WR** and **WL**



**35.** Join **WR** and **WL** together at the centre. The wing tips should overlap.



**36.** Finally, glue the wings to the body, starting from the front and working backwards one side at a time. The internal support and double flaps should allow enough pressure to be applied to the glue join from the outside only